

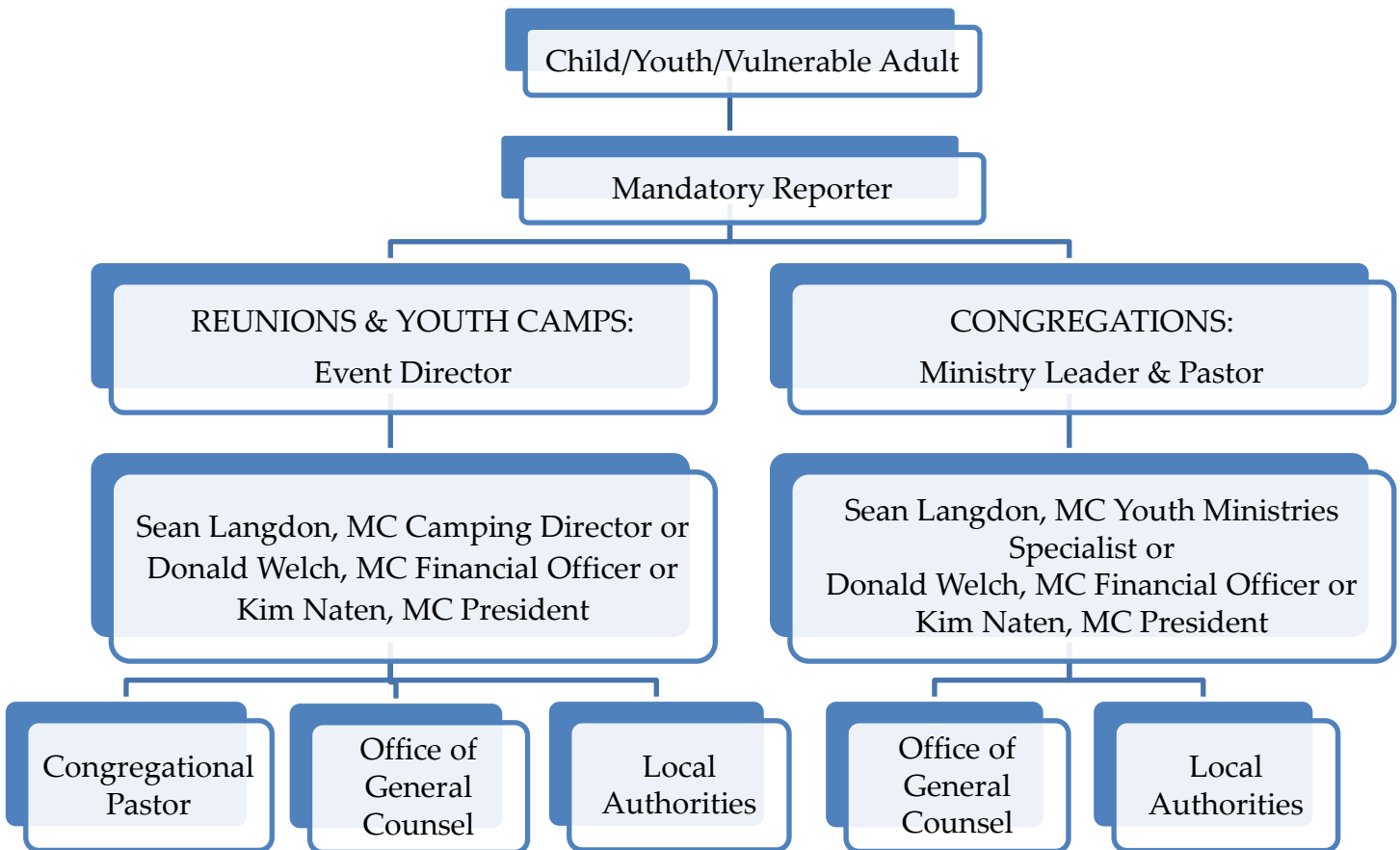


# Community of Christ

GREATER PACIFIC NORTHWEST USA MISSION CENTER

## Mandatory Reporting: To Whom Do You Report?

To uphold the safety and well-being of the child/youth, the following process must be followed through immediately after an allegation of abuse is shared or witnessed:



In all other situations, or if not sure, contact:

- **Sean Langdon:** 425-293-6366 (cell), [slangdon@cofchrist-gpnw.org](mailto:slangdon@cofchrist-gpnw.org),
- **Kim Naten:** 360-748-3562 (home office), 360-520-7646 (cell), [knaten@cofchrist-gpnw.org](mailto:knaten@cofchrist-gpnw.org)
- **Donald Welch:** 712-310-0718 (cell), [dwelch@cofchrist-gpnw.org](mailto:dwelch@cofchrist-gpnw.org)

If you cannot reach any of the above, please contact World Church Risk After Hours Emergency at 816-853-0012, make the report to local authorities, and follow-up with Sean, Kim, or Donald. If you cannot reach anyone on the after hours line either, please make the report to local authorities and follow up with Sean, Kim, or Donald. GPNW Mission Center leadership will notify the appropriate mandatory reporter(s) once the report has been filed with local authorities.